



Graiseley Primary School

**Guiding Preparing  
Succeeding**

# The Graiseley Grapevine

Friday 29th January 2016

**Mrs. S. Nasa**  
Headteacher

## Special dates:-

**Thursday 4th Feb**  
Parents Workshops  
for Read, Write

**Tuesday 10th Feb**  
Photographer—  
individual and fami-  
ly group photos 8.30

**15th - 19th Feb**  
Half term

**Thursday 25th Feb**  
Parents Evening  
3.30-6.30pm

**Monday 29th Feb**  
Parents Evening  
3.30-6.30pm

**7th March**  
Fair-trade Week

**Thursday 10th Mar**  
Breakfast with the  
Mayor 8-8.45am £2

**Thursday 24th Mar**  
Lip Sync Battle  
2.30pm

**Term ends**

**Friday 25th March**  
School CLOSED

**Monday 11th April**  
BACK to School

**Monday 2nd May**  
BANK HOLIDAY

**Monday 9th May**  
KS2 SATs Week

**30th May—3rd June**  
Half term

**Monday 6th June**  
BACK TO SCHOOL

**8th 9th June**  
YR1 residential

## School Evacuation Plan

Please be rest assured that we have a comprehensive plan for all eventualities - whether they are false alerts or other emergencies. With the current climate of threats to schools I want to share with you that if Graiseley was under any similar emergency we have an Evacuation Plan in place. The children would be evacuated to the Christian Life Centre and then parents would be texted to collect children from there. It is a 5 minute walk away from school—on Sedgley Street.

IT IS VITALLY IMPORTANT THAT YOU GIVE US AN UP TO DATE MOBILE NUMBER.

We have found that some families who do not give us updates on their emergency contact number.

## Parintii care intarzie la serbarile copiilor nu vor mai fi lasati sa intre.

Draga Parinte,

Personalul, elevii si Guvernatorii de la Graiseley Primary vor ca scoala sa fie recunoscuta ca o scoala buna pentru elevi. Unul din lucrurile care ne opresc este faptul ca parintii nu aduc copii la scoala in timp.. In fiecare dimineata copii intarzie—asta se intampla in fiecare dimineata pentru uni.

Cand avem prezentarii sau serbare parinti vin tarziu si deranjaza toata scoala cand intra. In viitor nu vor mai fi lasati sa intre.

Asta da un exemplu negativ elevilor.

Nu fiti dezamagiti daca nu veti fi lasati la serbarii pentru ca ati venit tarziu..

Multumim pentru intelegere.



## Year 4 Cadbury World



Year 4 went to Cadbury World to study the Mayan Civilization, where cocoa beans came from and how they were processed into chocolate. A fantastic day out for everyone.

## Reception — People who help us

The Community Police came to visit Reception class to talk about their work and **Keeping Safe.**



Last Week's  
**WHOLE SCHOOL  
ATTENDANCE**

**94.1%**

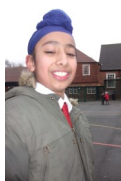
We need at least  
**95%** to be in line  
with the average

Graiseley Primary School is committed to Safeguarding Children

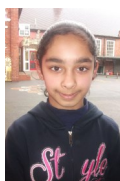
## Attendance Winners



Ria



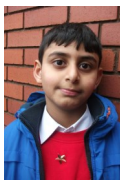
Nampreet



Simran



Pamarjit



Ayrton



Shane



Dante



Adenah

Were Last Week's winners of the 100% Attendance prize draw - well done.

The Gold award for Juniors was won by Year 6 with 97.1% attendance.

The Gold award for Infants was won by Reception with 97.9% attendance.

## Film Club



By Kyle

Rating 3/5

I like this film but it wasn't one that I would normally watch but it was interesting even though it was a silent movie it was very enjoyable it was a very old film it was made in 1925 and yes it was in black and white I enjoyed it and a few old people have probably got this film but some young people under 8 wouldn't understand. I would recommend it to over 10s.

By Nampreet

Rating 5/5

Amazing!!! Never underestimate old films. Even though it was a silent classic ( They couldn't speak so there were captions to help you understand what they said) it was SOOOOOOOO interesting. This was where it all began. Jurassic park AND Jurassic world! This film lets you experience how it was in the olden days. I would recommend this film to all ages.

## Reminder

If you haven't already done so, please could you provide the office with your National Insurance number as SOON as possible. School is funded according to this information and you may be entitled to Free School Meals — school trips also will be free if this is the case.

## Achievement Assembly Certificates

Please join us on Monday morning to celebrate our children's achievements.

You will get an invitation to our assembly on Friday if your child has been selected.



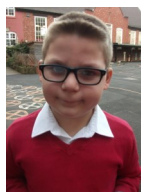
Aailah



Denisia



Milana



Darius



Farhan



Amrik



Natasha



Shardonay

## After School Clubs

### Monday

KS1 - Homework

Mrs. Cole

KS2 - Multi-sports

B2A

KS2 - Netball

Wolves coaches

### Tuesday

KS1 - Homework

Mrs. Drew

KS2 - Computer

Mr. Hampton

KS2 - Cricket

Mr. Patel

### Wednesday

KS1 - Multi-sports

Antonia B2A

KS2 - Tennis

Mr. Hole

### Thursday

KS1 - Singing

Mrs Hutchinson

KS2 - Multi-sports

B2A

### Friday

KS1 - Story Club

Miss Shea

KS2 - Film Club

Miss Effa

KS2 - Football

Wolves coaches

Graiseley Primary School, Graiseley Hill,  
Wolverhampton WV2 4NE

Phone: 01902 558745 Fax: 01902 558746  
Email: [graiseleyprimaryschool@wolverhampton.gov.uk](mailto:graiseleyprimaryschool@wolverhampton.gov.uk)

**SUPERVISION BEFORE SCHOOL** Please be aware that staff are not on duty until 8.40am each morning. Parents are responsible for children until then. Thank you.

See our school website —

[www.graiseleyprimaryschool.co.uk](http://www.graiseleyprimaryschool.co.uk)